

RVE FENDER FLARES

INSTALLATION INSTRUCTIONS
FORD RANGER 2022+

V1.0 2022.08



R V E

Driven by Design

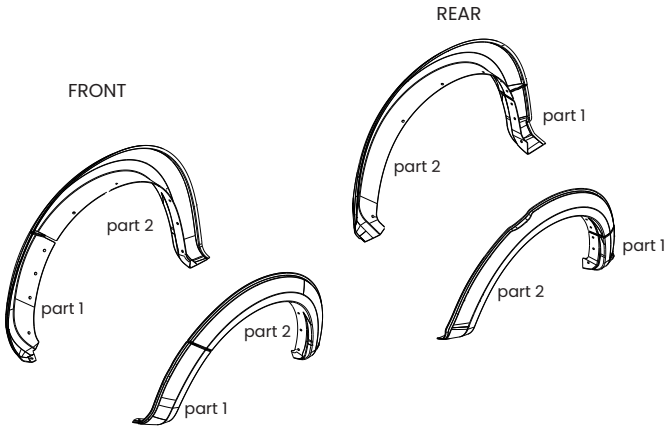




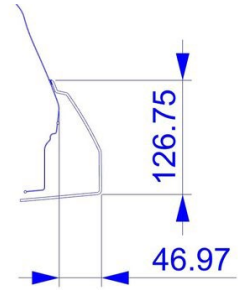
SECTION A

Component parts.

Fender Flares



Flare profile



	Self Tapping Screw 4x20mm.	14X		Self Tapping Screw 5x20mm.	20X
				Clip spring	20X
				Grommet (Small)	6x
				Grommet (Big)	8x

Tools



SECTION B

Installation tips

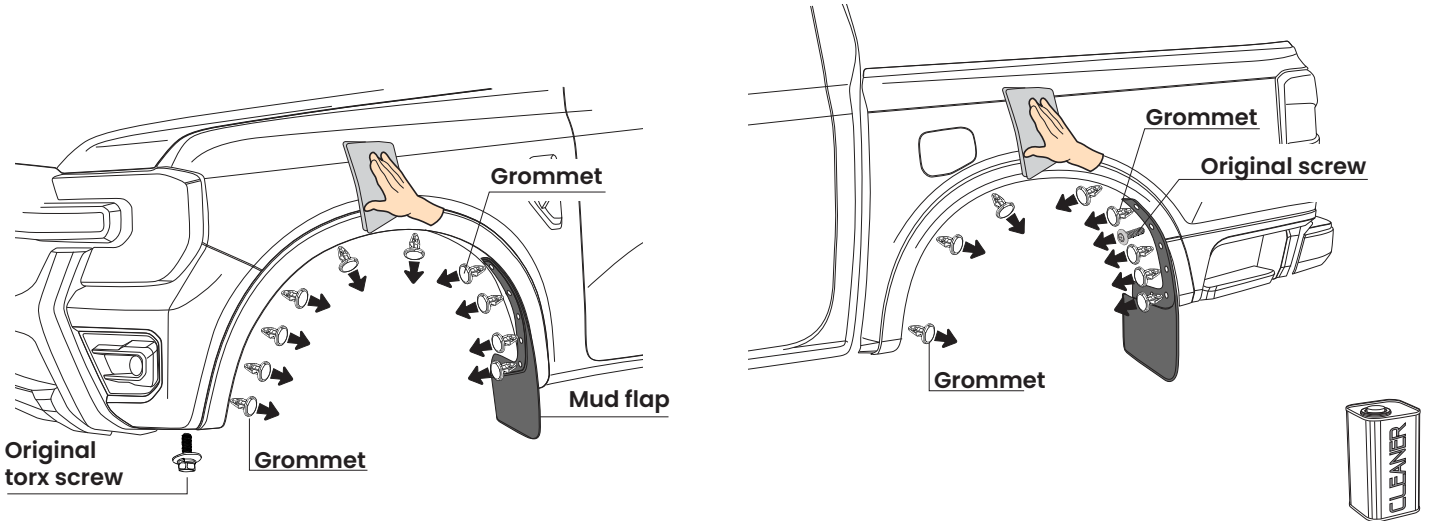
1. Do not clean parts/surface with petrol or thinners as it may cause damage to parts.
2. Remove all jewelry such as rings and watches.
3. Be extremely careful not to damage any painted surfaces.
4. Clean and dry the area of installation.
5. After installation, please keep the vehicle out of rain/water for 24 hours.
6. Discard rubber edge extension when painting/colour coding. Manually fill the small gap between flares and body with urethane and clean off excess.



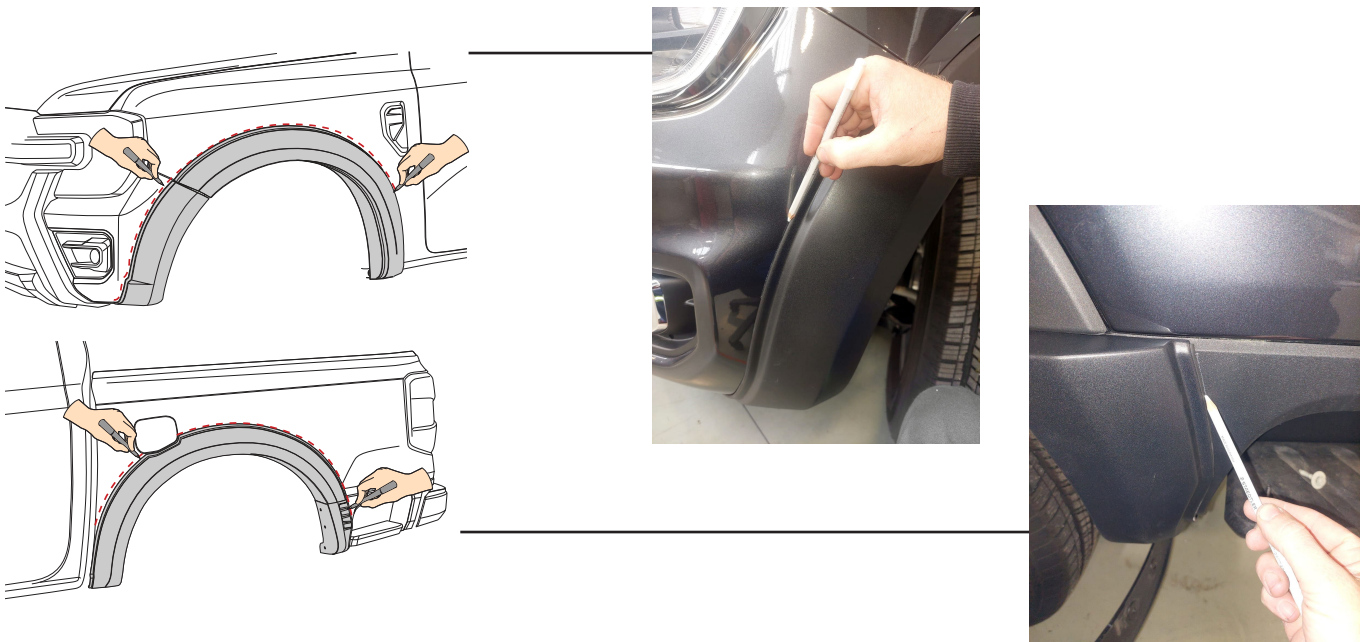
SECTION C

Installation

- 1 Remove original screws, plastic grommets and mud flaps, then clean the installation surface with alcohol or IPA. Wait until surface is dry before proceeding.



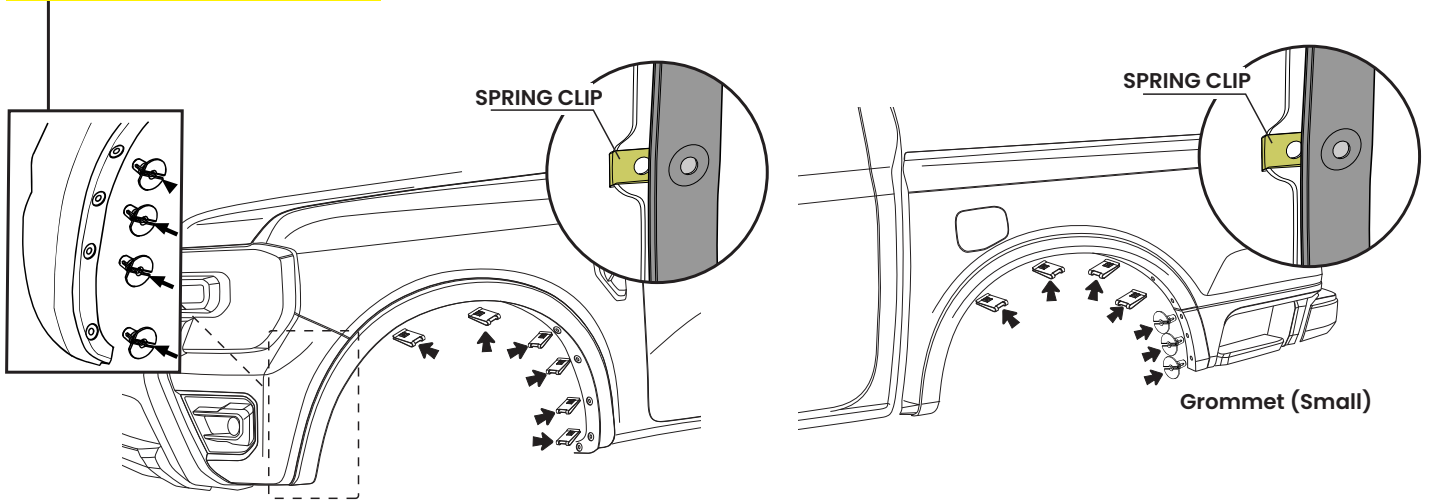
- 2 Place the new flare over the original fender trim, adjust position of separate pieces to ensure correct alignment before using a non permanent marker to mark the outer edge where the flare sits on the body.



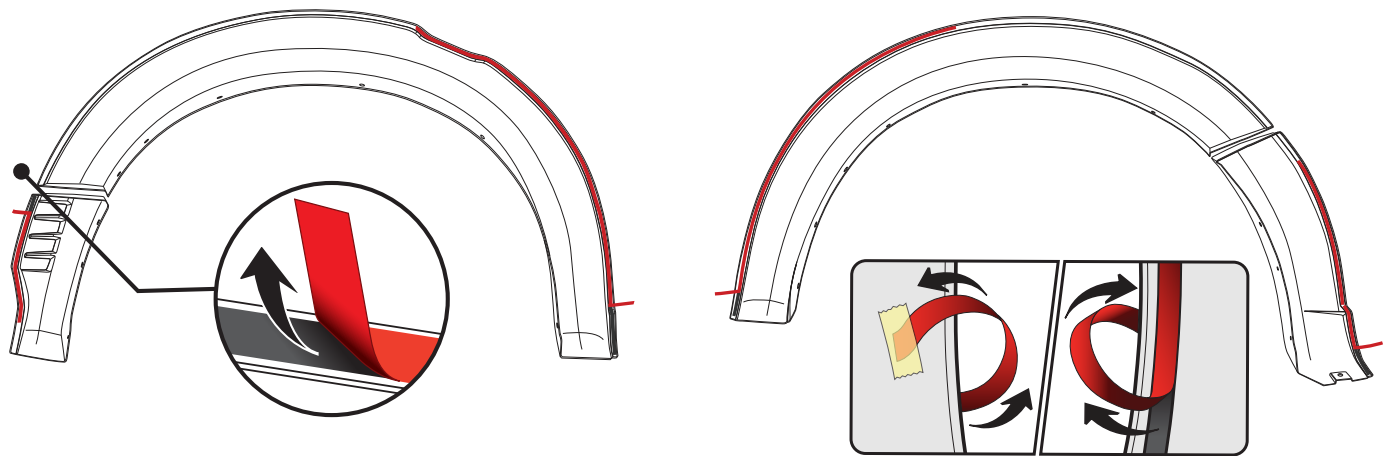


- 3 Install plastic grommets and spring clips to the original holes.

NOTE: Reuse the original grommets and fasteners in the front portion of front flares



- 4 Peel off a small section of either end of adhesive tape backing, fold out and tape backing to face of flare.





- 5** **IMPORTANT:** Brush the primer onto the vehicles paint, in the area that the self-adhesive tape will stick to, using 3M tape primer 94.

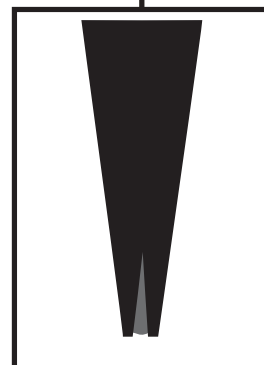
Note: Failure to clean paint and prime could result in declined warranty cover if flares come off.



- 6** Place flares face down on a clean and soft surface taking care to protect painted flare. Apply a liberal bead of MS urethane on the inside edge of 3M tape this will adhere the flare directly to guard to ensure long term stability of flare position and installation.



*Note: Make sure either end of each flare part has a liberal bead urethane applied.
Failure to add urethane as below may result in declined warranty cover if flares fail to adhere to body.*



Cut the nozzle into a V shape to create a high build bead of urethane.



7 Only applies to vehicles with sensor in front flare:



After removing the T25 torx screw under front edge carefully unclip the front portion of flare to gain access to the rear of the parking sensor. Unplug the wiring from the rear of the sensor and remove the original sensor head from the original sensor retainer.

Reroute original wiring between the body and original arch trim.



8 Adhere supplied left and right sensor retainers into position after cleaning and applying 3M Primer to the back of the flare.



Note: Ensure positioning of retainer gives uniform gap around the outer lip of the sensor retainer.



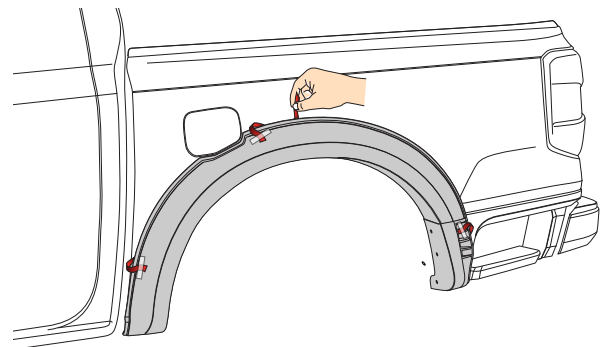
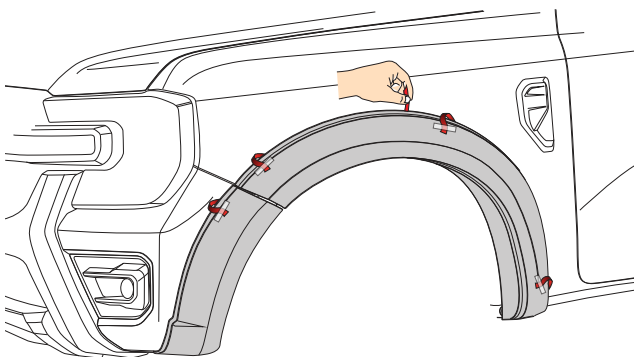
- 9 Clip sensors into rear of flare retainer and plug in original wiring.



Note: some retainers may need the top edge of the plastic trimming to ensure correct seating and clicking home of sensor into the retainer.

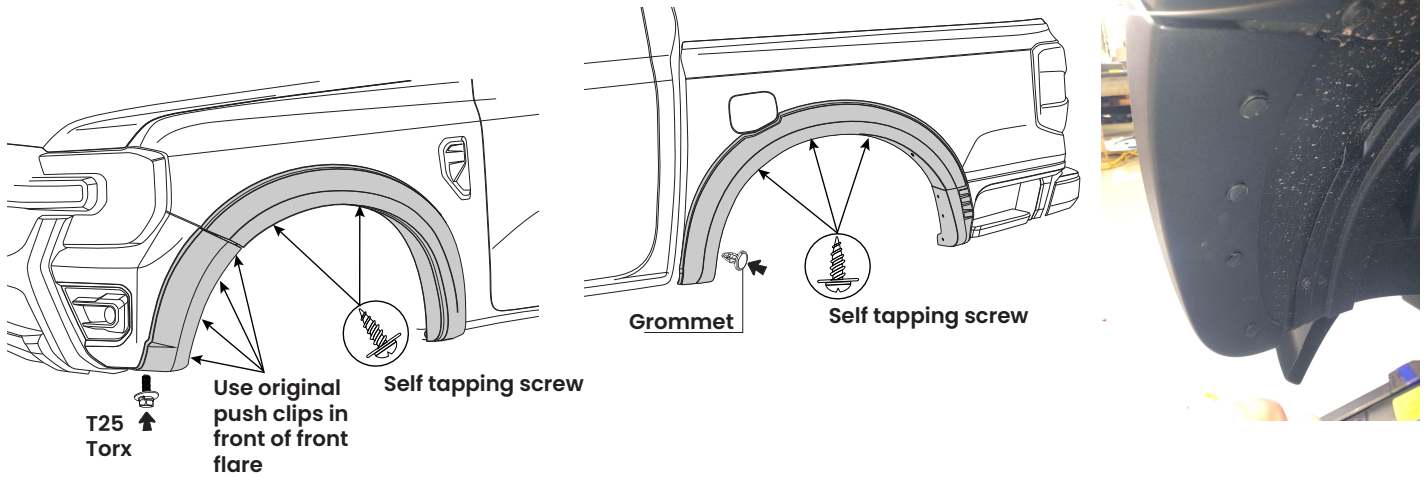


- 10 Carefully align flares into the correct marked position and peel off all adhesive tape backing. Apply light pressure to adhesive tape area to bond flare into position and make sure there is no gaps between the flare and body.

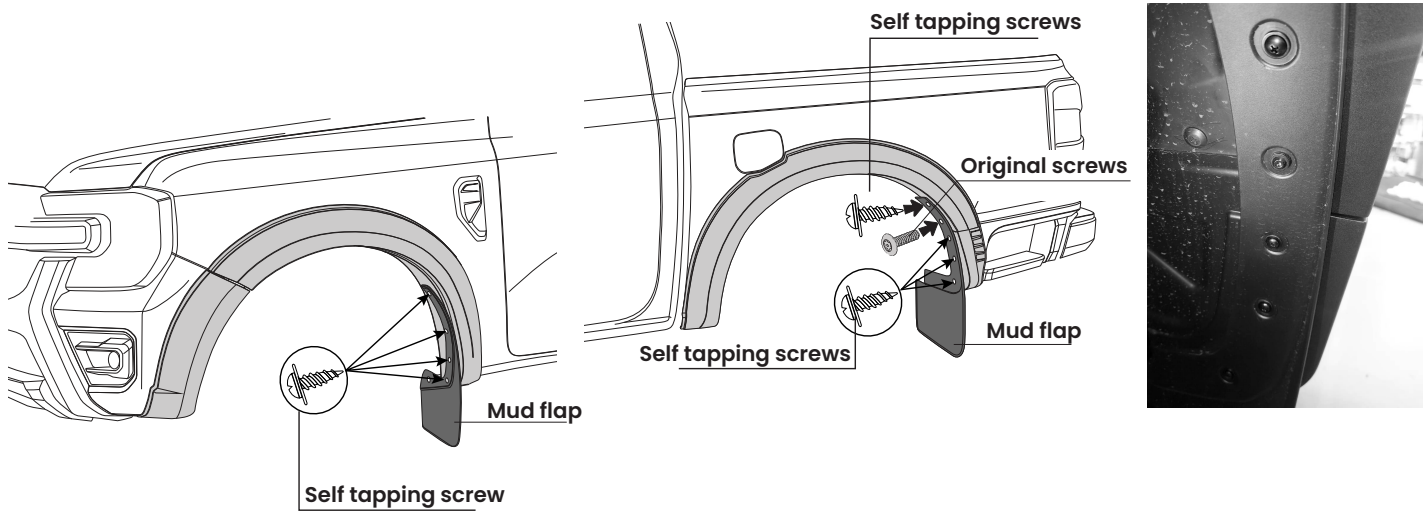




- 11** 4. Secure the inner edge of the fender flare by tightening the screws and install the plastic grommets



- 12** Install original mudflaps using supplied self tapping screws.





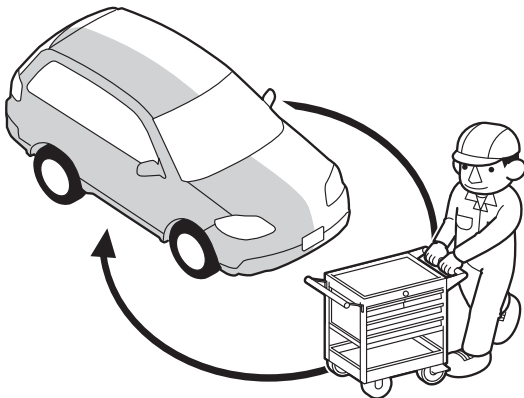
Painted/Colour coded flares only.



Remove rubber edge extrusion and discard before painting. After installation, run a bead of MS urethane around outer edge of flare to fill the 1-2mm gap between the flare and vehicle body.



Remove excess urethane with a plastic spatula and wipe off with a clean cloth and prepsol, before leaving for one hour to cure. Reclean any residual urethane film off paint and flares with a polishing cloth to achieve a new car paint finish.



QC after installing - Please recheck all screws are correctly aligned and tightened. Recheck all original grommets are correctly installed. Apply light pressure to adhesive area again to ensure there are no gaps between flares and paint work.



R V E

Driven by Design

This content is subject to change
for related info visit
www.rve.co.nz/ford-ranger-flares

