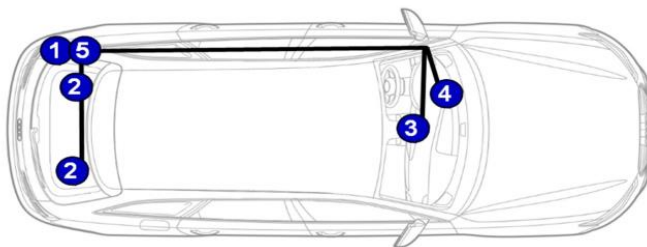


These instructions are only for assistance. Only the installation location of the vehicle is shown here. Please also note the general instructions for the assembly aid.

NOTE: THESE ARE FOR LEFT HAND DRIVE VEHICLES -
CHECK CAREFULLY BEFORE FITTING

WIRING DIAGRAM

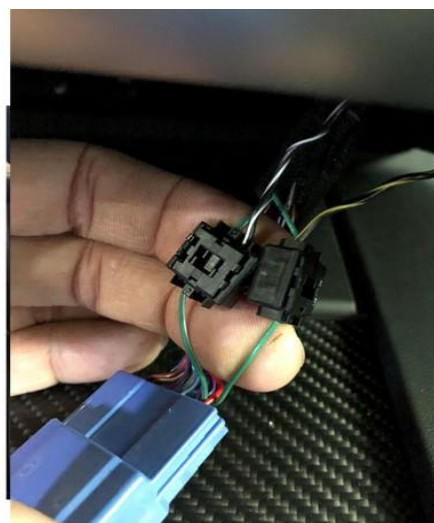


- 1 - Control units
- 2 - Speakers
- 3 - Can bus
- 4 - Fuse box
- 5 - Mass point (ground)

CAN-BUS

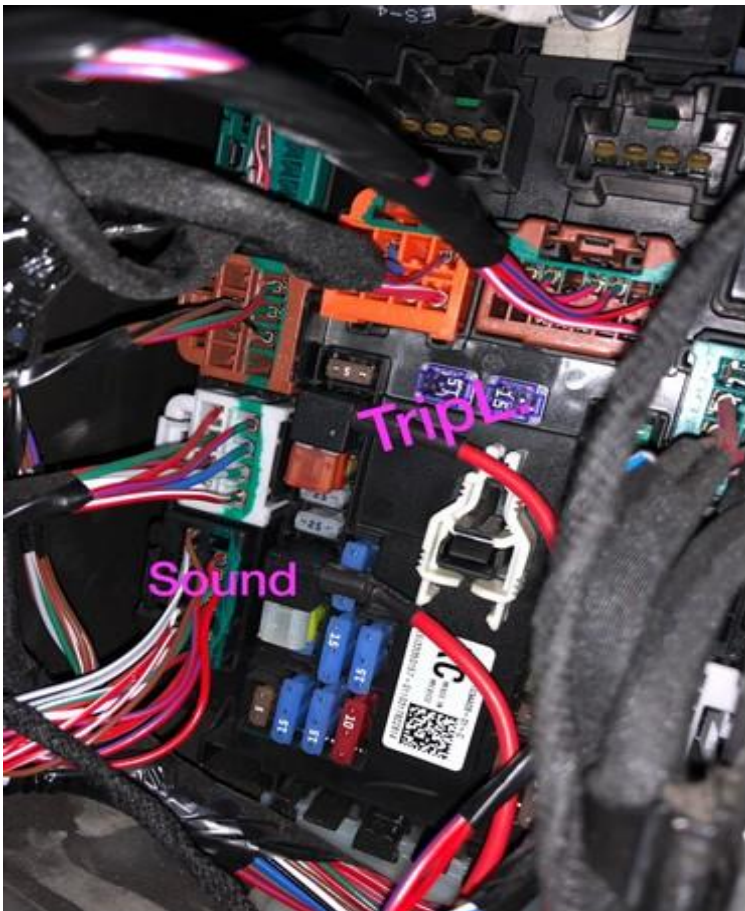
Center Console

Can High: Green / White
Can Low: Green



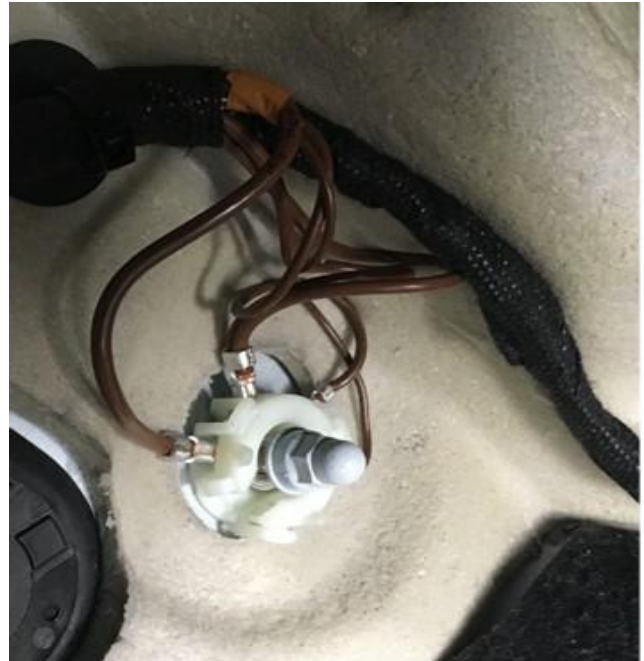
POWER

Put red cable on ignition plus (terminal 15)



GROUND

Screw black cable to suitable ground point (body)



SPEAKER



SPEAKER



If you require further help or guidance please contact us +64 9 582 0000