

RVE TOUGH LINER

INSTALLATION INSTRUCTIONS
FORD RANGER 2022+

V2 2023.01 XLT/SPORT/RAPTOR





Contents

SECTION A

In the box

Page 3

SECTION B

You will need

Page 3

SECTION C

Instructions

Page 4



Thank you!

for purchasing a Tough Liner



Scan it to watch the **Installation video.**

SECTION A



In the box

- 1x tub side/front section
- 1x base and tailgate section
- 19x long strips of hook Velcro with stainless steel plate
- 14x short strips of hook Velcro with stainless steel plate
- 7x short strips of hook Velcro
- 6x alcohol wipes

SECTION B



You will need

Car wash soap and warm water (if your tray is dirty and requires cleaning)



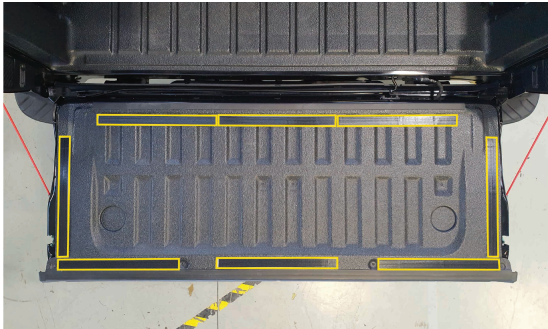
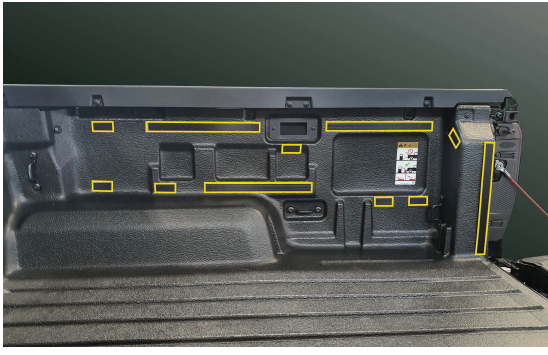
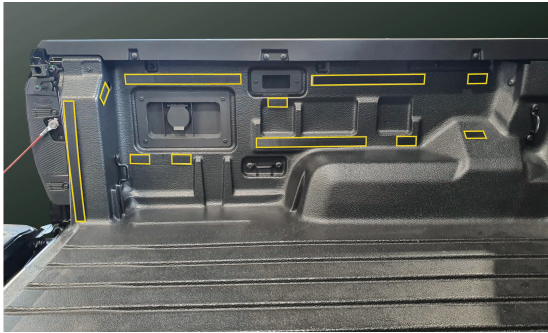
Time to allow: 1 Hour



SECTION C

Instructions

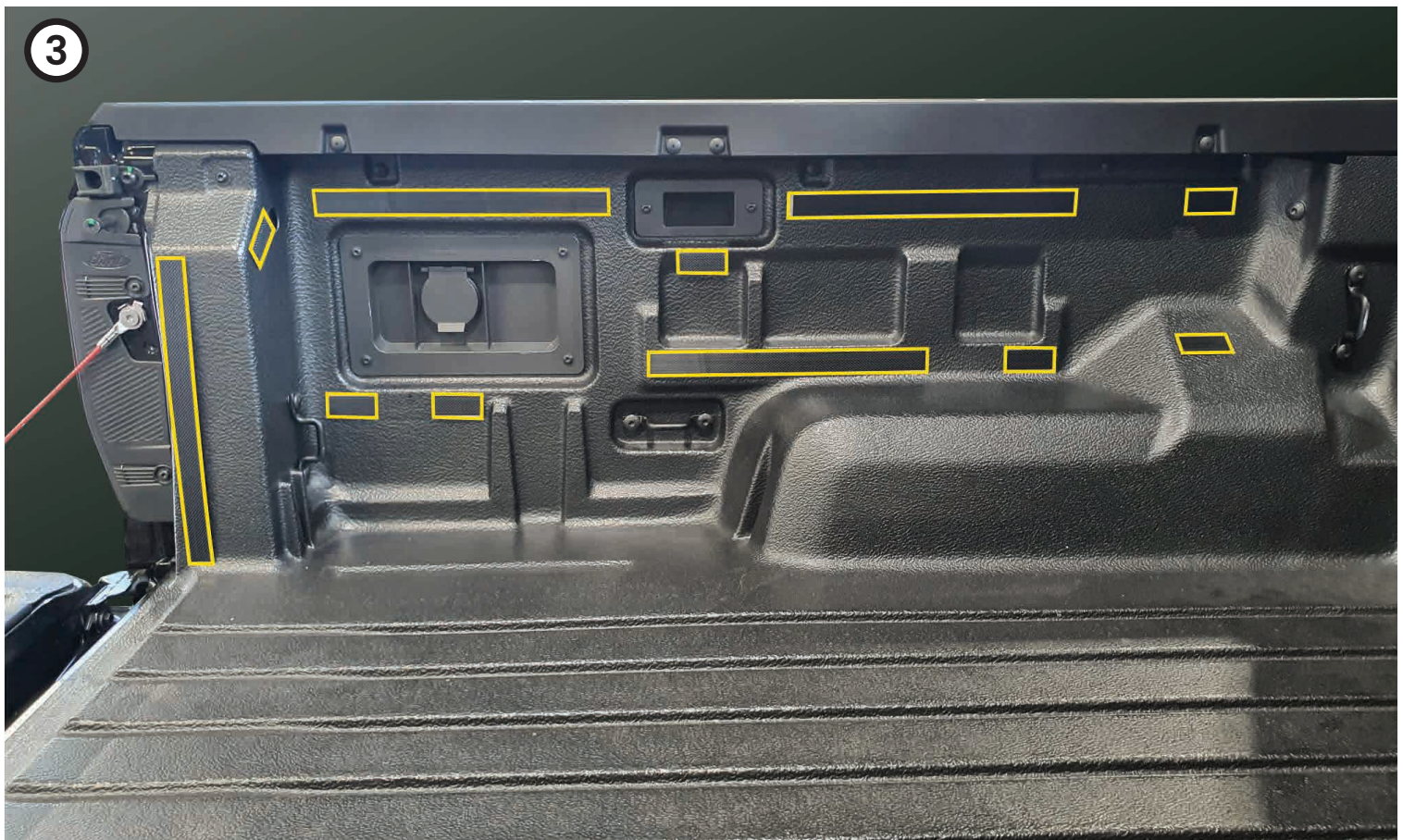
Please follow instructions precisely to ensure you get the best results from your purchase. It is important careful attention is taken to clean and dry the stick surfaces thoroughly



- ① Clean tray surfaces using car washing soap and warm water. Then dry.
- ② Using the supplied alcohol wipes, **clean thoroughly** the areas where the adhesive backed hook velcro will attach to. (Note: Adhesion promoter is not required)
- ③ Stick Velcro strips in position as per guide photos. Press down **firmly** on each strip to ensure it adheres properly. Refer to photos on pages 5 & 6.
 - Velcro with red outline: plain hook velcro for sticking to steel surface.
 - Velcro with yellow outline: hook velcro with stainless steel plate for sticking to plastic liner.
- ④ Now install the side section using the tie-down cut-outs to correctly position the tough liner. Press into place so Velcro grabs. Refer to photo on page 7.
- ⑤ Install the floor mat last by curling it up length ways (refer to photo on page 7). Once rolled up push it in and up against the front wall. Now unroll into position. This may need to be done a couple of times to get it sitting centre and clear of the tailgate latches on both sides.

Done!

For further install tips, please watch the installation video online.

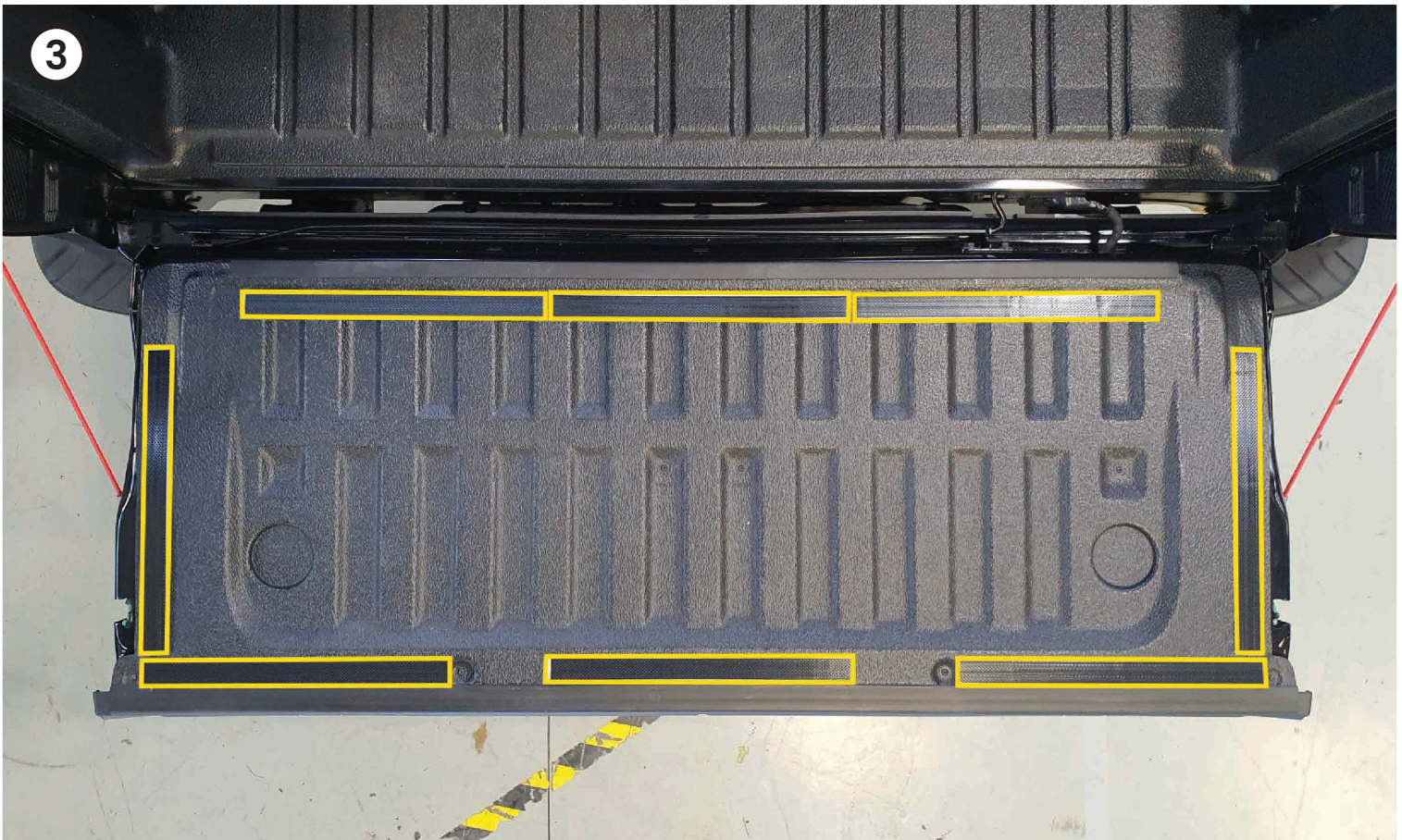




3

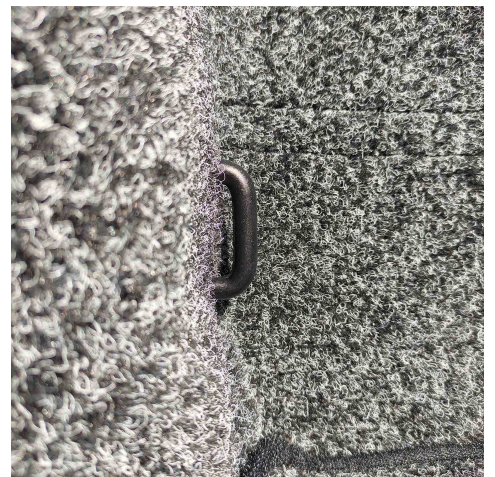
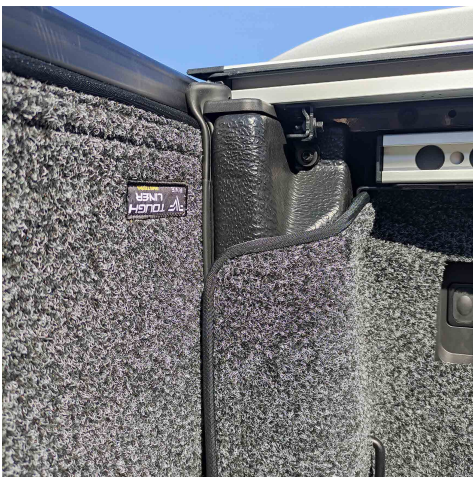
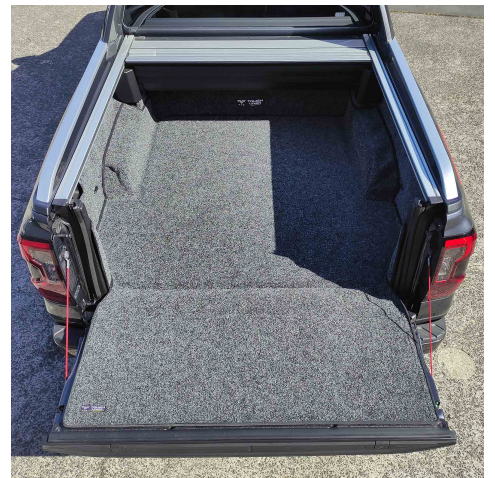


3





FINAL RESULT: Tough Liner installed





If you have any feedback or suggestions, **we would love** to know. Please scan this QR code and we look forward to hearing from you.



This content is subject to change
for related info visit
www.rve.co.nz/rve-tough-liner