



PREPARE FOR THE INSTALLATION

Note: Installation should be completed by suitably trained personnel for warranty purposes

Remove Negative terminal from battery

Remove 4 x bolts securing each seat to the vehicle.

Unplug the connectors under the seats and remove headrests.

Safely remove the seats from the vehicle.

Remove the covers from the seats, exposing the foam.

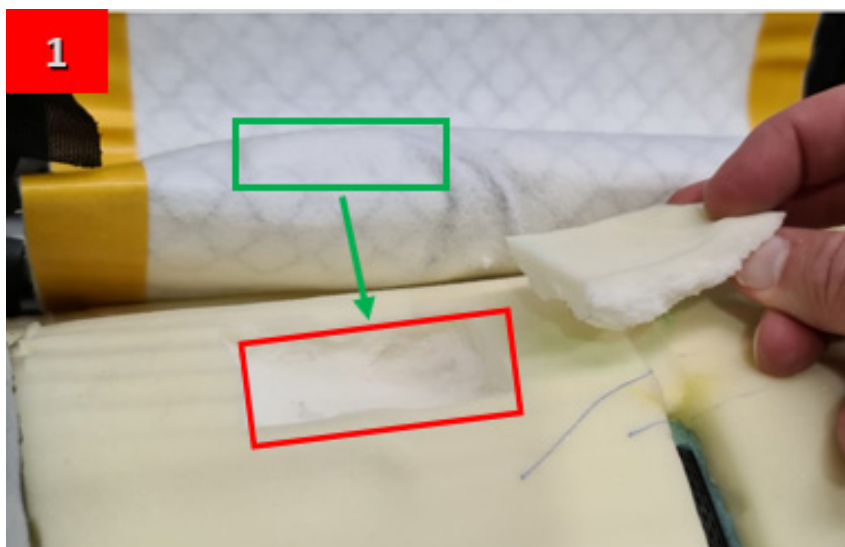
INSTALL HEATER PANELS ON SEATS (repeat for both seats)

Orientate the heater pad on the backrest, with wires pointing to the bottom.

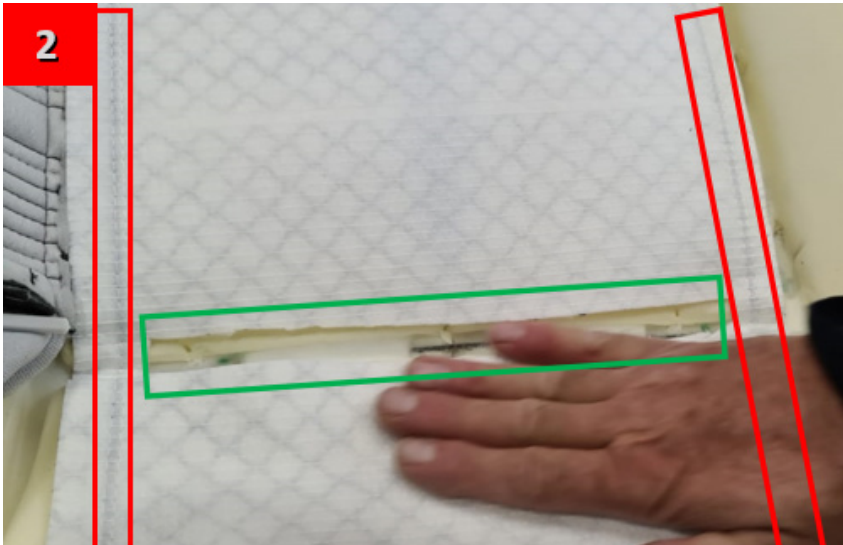
Remove the lower adhesive backing only, and stick along the bottom edge of the foam.

Cut out section of foam to allow the thermistor to be positioned with no bulge.

SEAT BACK



Cut approx
20mm x 60mm x 10mm deep



Roll down heater pad on the foam, and mark the position of the cover retainer wire on the pad.

Cut out the section between the power strips on the sides of the pad.

Approx 25mm wide.

DO NOT CUT THROUGH THE SIDE POWER STRIPS.



Remove the remaining sticker backing, and attach the heater panel to the foam. Follow the curves and grooves, particularly adjacent to the retainer wire.

Route the heater pad wiring harness to the side of the foam and underneath the seat base.

Note: leave enough slack for the seat to recline.

SEAT BACK

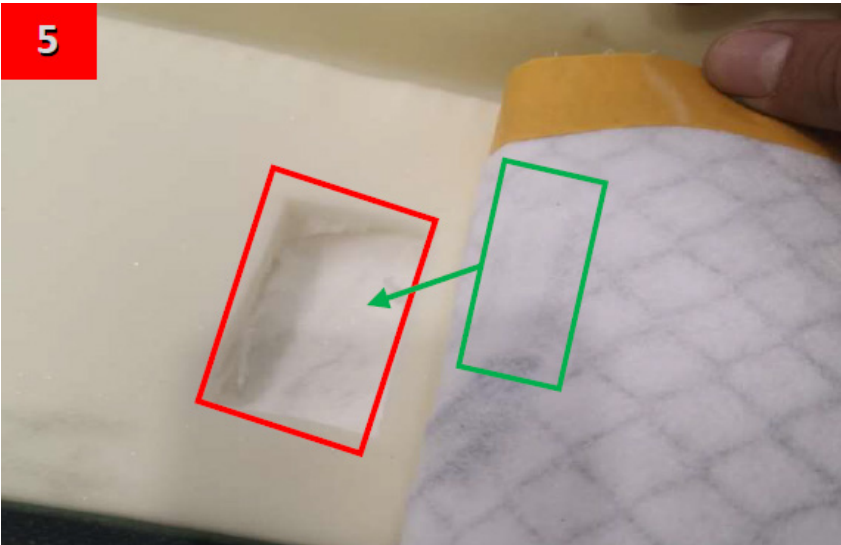


Align the 2nd heater pad on the base, as pictured, with the rear edge just in front of the occupancy sensor pad wire. (passenger seat)

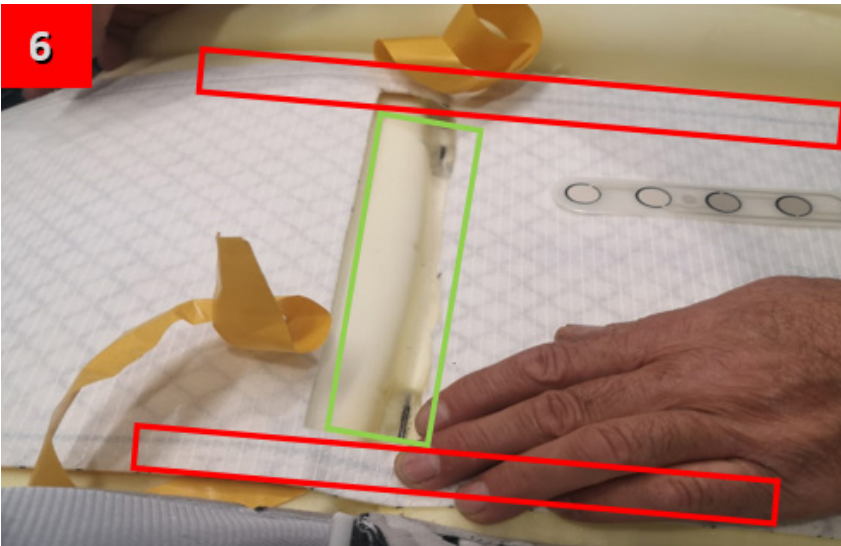
Carefully peel the sensor pad from the foam, remove adhesive backing from the heater pad and stick to the foam.

Stick the sensor pad over the heater pad.



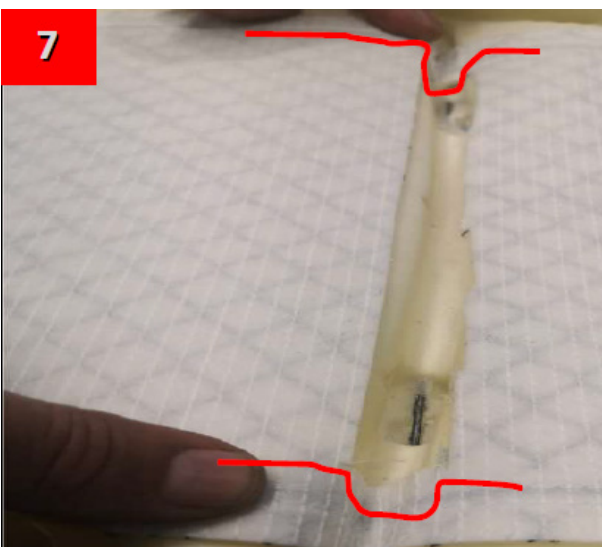


5 Cut out a piece of foam to allow the thermistor to be positioned flat.



6 Mark the position of the retainer wire on the pad. Cut out the section between the power strips on the sides of the pad.

DO NOT CUT THROUGH THE SIDE POWER STRIPS.



7 Remove the sticker backing, and stick the heater panel to the foam. Follow the curves and grooves, particularly adjacent the retainer wire.



8 Guide the base heater pad wire through the hole along with sensor pad wire. Join with back wiring connector and cable tie in a secure position.

Note: Check seat functions do not interfere with wiring.

REASSEMBLE THE SEATS AND REFIT THE COVERS TO THE SEATS.

INSTALL WIRING LOOM - SWITCHES AND WIRING

Remove centre console covers, mark the switch positions, and drill the switch holes to 20mm diameter as pictured below

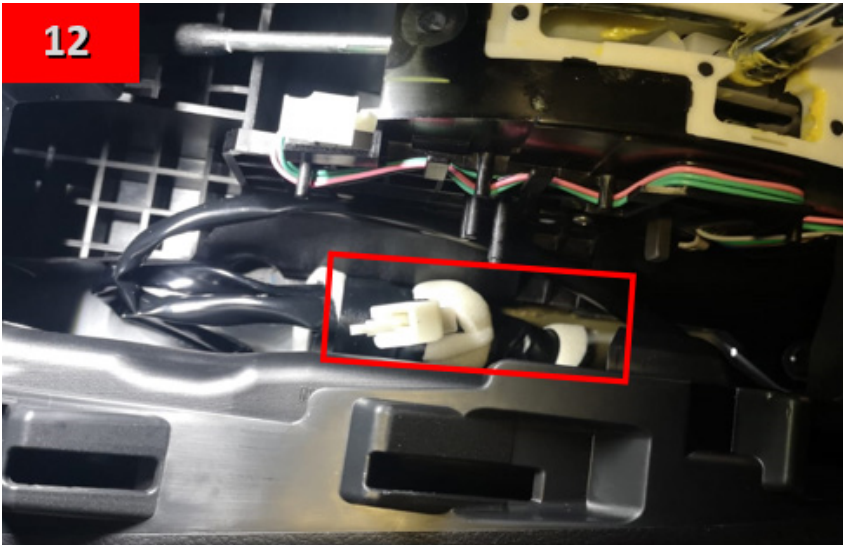


Insert the switch harness into the drilled holes, and guide wires to the cavity in front of gear lever.



Guide the left and right main wiring through the console and behind the carpet. Route out under carpet to join factory seat wires. Tape together for support.

12



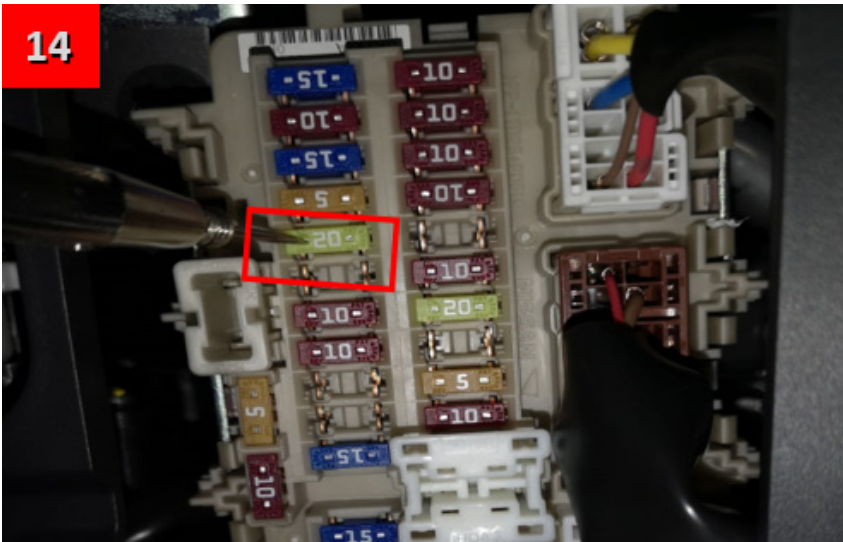
The relay and switch connectors should be positioned in the centre console cavity. Plug in the switch connectors.

13



Power supply wires should be routed to the fuse panel, behind dash and carpet.

14

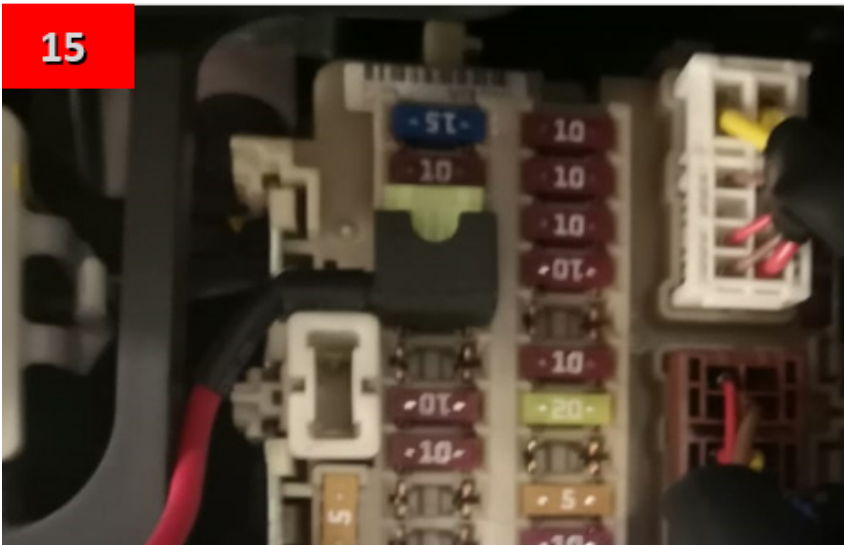


Connect both RED positive wires to a single "add-a-circuit" fuse holder, with a 20 amp fuse.

Connect to the 20amp fuse socket as shown in picture.

Note: Always check if power source is suitable first.

15



Note orientation of the "add-a-circuit" fuse holder.

Negative BROWN wires should be connected together and connected to an earth terminal behind the panels.

Loop all excess wires together and fit in a suitable location away from sharp edges.

- Replace all removed plastic parts.
- Reinstall seats into the vehicle.
- Connect the wiring under the seats.
- Reconnect battery negative terminal.
- Test operation (Should only be ON with ignition on, or battery will go flat).

WIRING & PAD DIAGRAM

